

Pro'sKit®

Professional Tool Solutions Since 1991

KRONE 110 IMPACT TERMINAL TOOL



**One Step to Punch & Cut
Your Choice to Cut or Not**



Reliable



Easy



Multifunction



Service

CP-3141A



Pro'sKit®

Professional tool solution since 1991

Prokit's Industries Co., Ltd., based in Taiwan, manufactures professional tools since 1991, supplying 4,000 products in 22 categories of hand tools, power tools, soldering equipment and test instruments used in different fields of electronic, computer, networking & telecom industries and education as well.



QUALITY ASSURANCE



AFTER-SALES SERVICE

DETAILS



ONE STEP TO PUNCH & CUT

You can cut off excess wire while punch



Cutting Blade

Sensor Spring

Punch Groove

YOUR CHOICE TO CUT OR NOT

Adjustable Cutting Lock



Open: Impact & Cut

Close: Punch Only



STOP RING DESIGN

When Cutting Lock is **Opened**

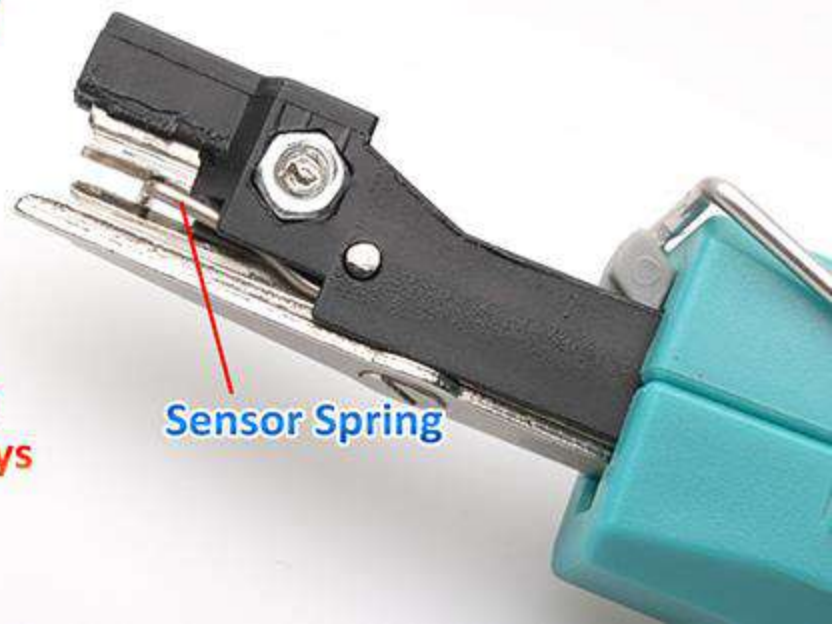


Stop Ring Open:

Only when the sensor spring has been pushed, it would trigger impact & cut function.

Stop Ring Close:

The sensor spring has been pulled down, you can always impact & cut.



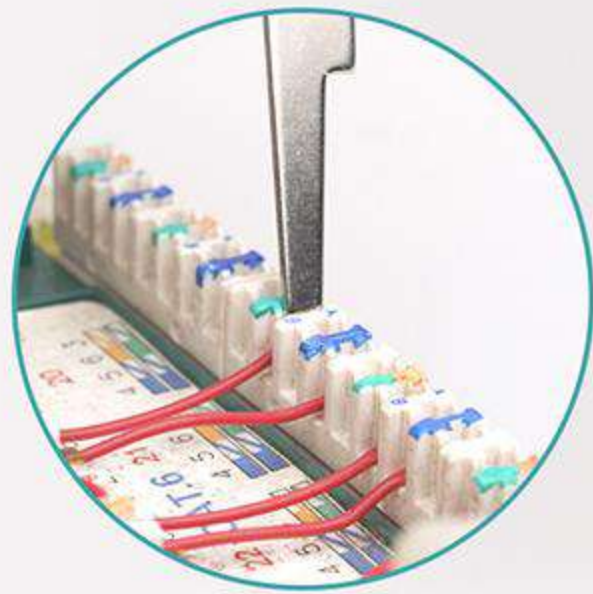
Sensor Spring

ASSISTIVE TOOLS

Hidden design with lock



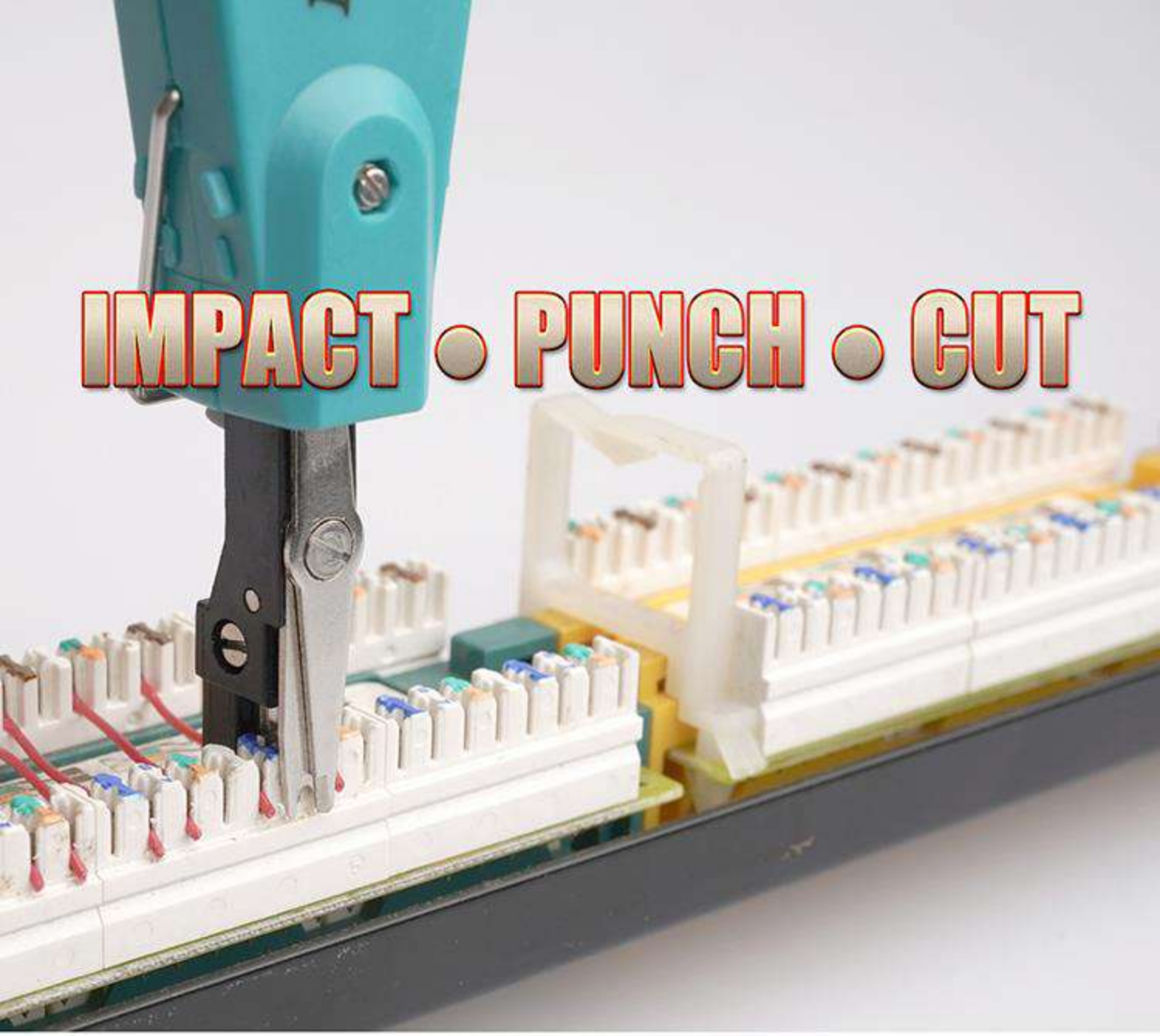
WIRE PUSH



WIRE PULL



IMPACT • PUNCH • CUT





Material	Function	Blade	Application	Dimension
ABS + Carbon Steel	Punch & Cut	Krone	Network Installation	185 x 34 x 25 mm

CP-3141A

Pro'sKit®

Professional Tool Solutions Since 1981

KRONE IMPACT TERMINAL TOOL WITH LOCK

**Impact
Safety Lock
Assistive Tools
Adjustable Cut**



OAL: 185mm