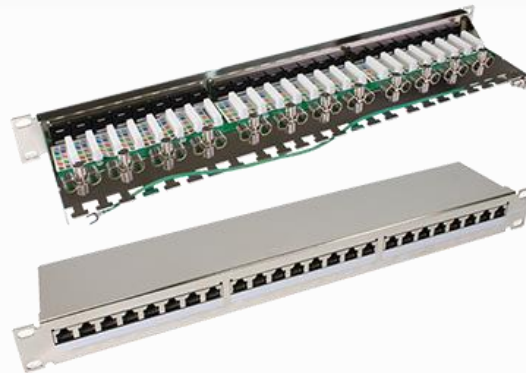


CAT.6/6A Shielded Patch Panel 1U



IKCOM's cost-effective PCB type STP patch panel is designed for superior performance that meets or exceeds industry standard Category 6/ Class E ANSI/TIA-568.2-D and ISO/IEC 11801 2nd edition. Screw-on cable fixture provides most easy and efficient way for installation.

Features

- Contacts are phosphor bronze plated with 50 micro inches hard gold
- KRONE/110 universal IDC connector provides vertical termination for 23-26 AWG solid wires
- Dual T568A/T568B wiring
- Polycarbonate 94V0 rated
- 4PPoE compliant in accordance with IEEE802.bt Type 4

Ordering Information

Part No.	Description
IK-PP-PS224R6S0	Cat.6 STP L-Type 24-port panel T568 A/B Wring, KRONE/110 IDC 1.75" x 19"
IK-PP-PS224RAS0	Cat.6A STP L-Type 24-port panel T568 A/B Wring, KRONE/110 IDC 1.75" x 19"