

## SC Fiber Optic Connectors



### Description

An optical fiber connector terminates the end of an optical fiber and enable quicker connection and disconnection than splicing. The connectors mechanically couple and align the cores of fibers so light can pass. Better connect or lose very little light due to reflection or misalignment of the fibers. The SC was developed by the laboratories at Nippon Telegraph and Telephone (NTT) in the mid-eighties, and was one of the first connectors to hit the market following the advent of ceramic ferrules. Sometimes referred to as the 'square connector' the SC has a push-pull coupling end face with a spring loaded ceramic ferrule. Initially intended for Gigabit Ethernet networking, it was standardized into the telecommunications specification TIA-568-A in 1991 and slowly grew in popularity as manufacturing costs came down. Due to its excellent performance it dominated fiber optics for over a decade with only the ST rivalling it. Thirty years on, it remains the second most common connector for polarization maintaining applications. The SC is ideally suited for datacoms and telecoms applications including point to point and passive optical networking. The manufactures many sorts of fiber connectors. Such as SC,LC,ST,FC,MU,MTRJ,E2000 ,MPO,MTP,SMA,DIN,D4 etc.

# SC Fiber Optic Connectors

## Optical Performance

Meets Telcordia GR-326-Core issue

IL (Typical): SM <0.3dB ; MM <0.3dB

RL (Typical): SM >50dB ; MM >35dB

## Mechanical Performance

Connection Durability: 500 Matings cycles

Connector Repeatability: MM < 0.2 dB ; SM <0.1dB

## Environmental Performance

Operating Environment: -40°C ~ + 80°C

Meets UL94-V0 Flammability Requirements

ROHS compliant

## Application

Patch cord & pigtail produce & Manufacture

## Products Details

Fiber Connector	SC	Ferrule Material	Zirconia Ceramic 2.5mm OD
Housing	SM: Blue MM: Beige/aqua/magenta APC: Green	Boot Size	0.9mm, 2.0mm, 3.0mm
Operating Temp. Range	-40~80°C	Boot color	SM: Blue/white/red/yellow MM: Beige/aqua/magenta/black APC: Green
Suit Cable	0.6-3.0mm OD cable	Available for	Not assembled Multi-Piece Pre-assembled one piece

# SC Fiber Optic Connectors



## Boot Type



*Standard Boot    Square Boot    short Boot*

## Connector Housing Type

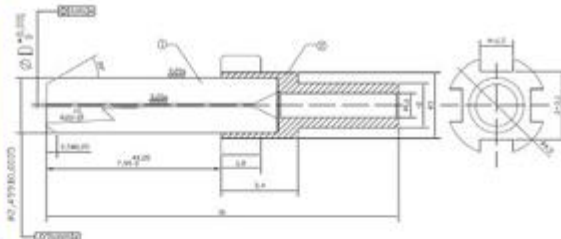
We offer many different color Housing SC, Such as Blue, Beige, Aqua, Magenta, Black, Pink .....

## Dust cap Type

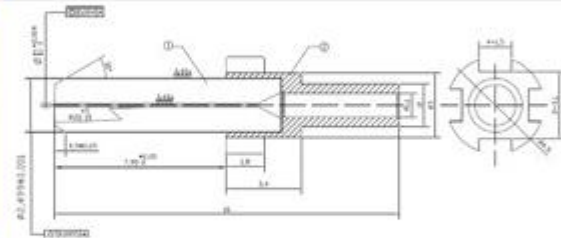


*Standard cap    Cap with Fix Tail*

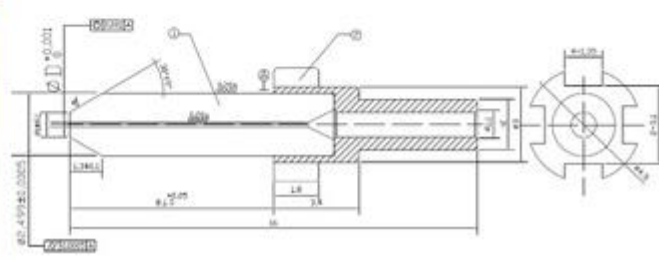
## Ferrule for LC Connector



SM UPC Ferrule for SC SM UPC Connector  
 Concentricity < 1.0  $\mu\text{m}$  for standard quality demand  
 Concentricity < 0.3  $\mu\text{m}$  for IEC grade B demand



MM Ferrule for SC MM PC Connector  
 Concentricity < 4.0  $\mu\text{m}$  for standard quality demand  
 Concentricity < 1.4  $\mu\text{m}$  for IEC grade B demand



SM APC Ferrule for SC SM APC Connector  
 Concentricity < 1.0  $\mu\text{m}$  for standard quality demand  
 Concentricity < 0.3  $\mu\text{m}$  for IEC grade B demand



## SC Fiber Optic Connectors



### Oder Information

Part No.	Description
IK-FOC-SC-SM-SX	Fiber Optic Connector - SM - SC -3.0mm Simplex - with crimp sleeves & boot
IK-FOC-SC-MM-M3-SX	Fiber Optic Connector - MM - OM3 - SC Simplex - with crimp sleeves & boot
IK-FOC-SC-MM-M4-SX	Fiber Optic Connector - MM - OM4 - SC Simplex - with crimp sleeves & boot